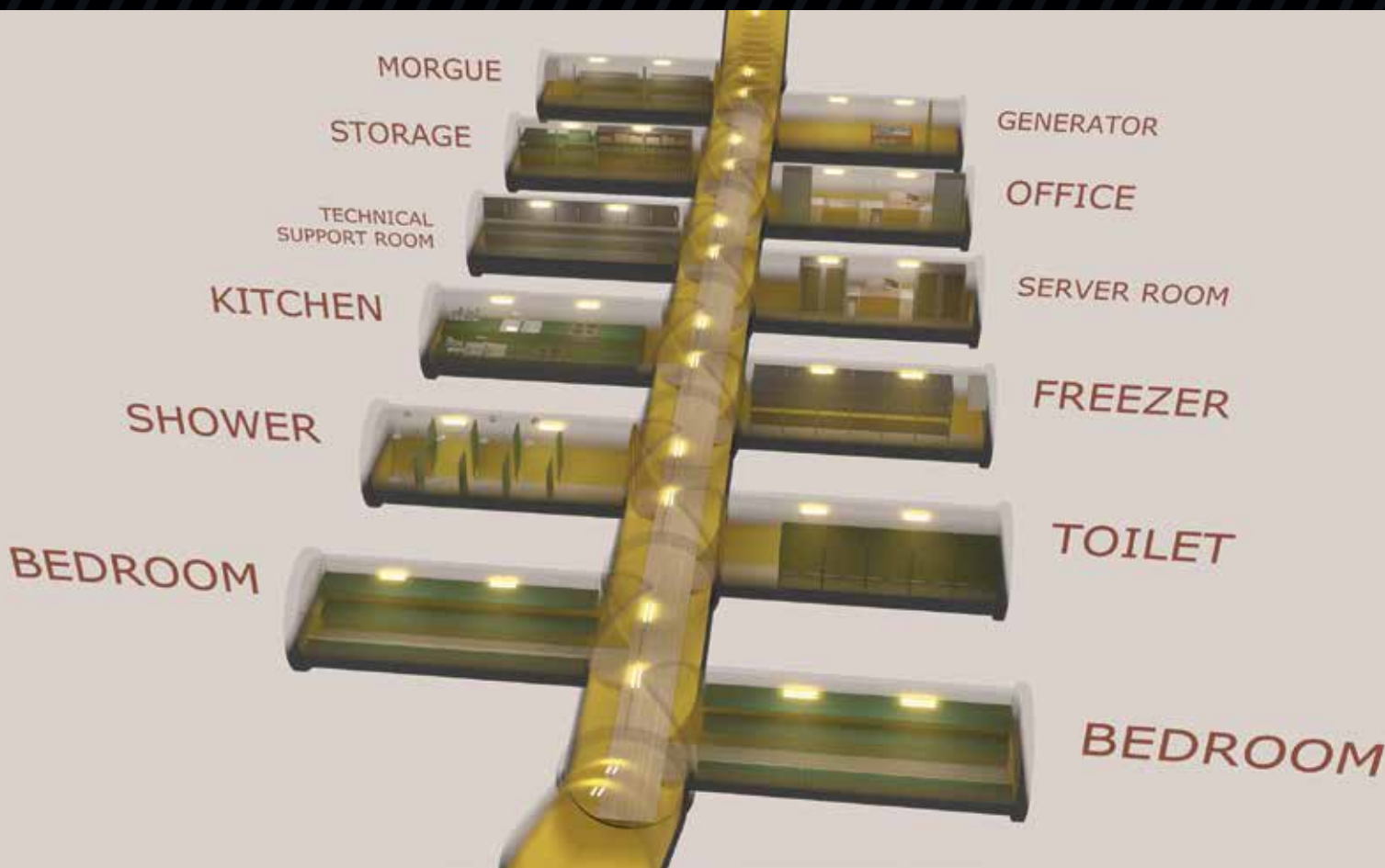


Terramil

MOBILE UNDERGROUND CITY



IT`S NOT A DREAM, IT`S REALITY!

WWW.TERRAMIL.EE

TABLE OF CONTENTS

Page
Nr.

2. TABLE OF CONTENTS
3. GENERAL INFORMATION
4. OFFICE MODULE
5. BEDROOM MODULE
6. SHOWER MODULE
7. TOILET MODULE
8. KITCHEN MODULE
9. STORAGE MODULE
10. TECHNICAL SUPPORT MODULE
11. GENERATOR MODULE
12. SERVER MODULE
13. COLDROOM/FREEZER MODULE
14. MORGUE MODULE
15. CORRIDOR MODULE

TERRAMIL OÜ

Register code:12710592
Gaasi tee 11, Lehmja küla
Rae vald, Harjumaa
ESTONIA

Phone: +372 5647 7000
e-mail: kristo@terramil.ee
WWW.TERRAMIL.EE



Estonian
Defence Industry
Association

GENERAL INFORMATION

Present brochure gives you an overview of an underground shelter system, designed to protect people from attacks by heavy weapons.

The shelters are manufactured from a material, that ensures water tightness, durability and light weight. Material is suitable for use in almost any environment – safe handling temperatures range from -80 to +60 degrees Celsius. The products have been successfully tested for the use in seismologically active areas. And the material is completely safe for human contact.

Defensive properties of the shelter depend mainly on three factors – the material used for the construction, used wall profile and the installation depth. Real life tests have shown that installation depth of 2m is enough to protect against 155mm shells. Thus the shelter is a great choice for the usage in all – civil, war and crisis areas. Testing with different types of heavy weapons was carried out during 2014 by the Estonian Defence Forces. The results are represented in a detailed report, issued by the work environment laboratory of the University of Tartu Testing Centre.

Our scope of supply of the shelters includes special purpose modules of which every one is designed for a certain purpose, for example including but not limited to sleeping module, kitchen, washing room, toilets, warehouse, coldroom/freezers, technological support room etc. In addition to that a completely new special purpose module can be designed according to the customer requests. Each module is usable as a separate shelter or it can be used as a part of a larger shelter system, compiled according to the requests of the customer. In addition to standard equipment auxiliary systems like CBRN protection, air and water purification systems etc.

All standard modules can be transported using regular trucks – the outside dimensions and the weight of the modules correspond to all legislative norms on regular road transportation. The weight of the standard modules is 2-3 tonnes, so even excavators used for digging the installation trench, can be used for loading and unloading the modules. It takes about 1,5h to install one standard module, this includes all the operations from arriving to the construction site and leaving from there.

The standalone shelter module or the more complicated shelter system can be easily relocated, when the services of the system is not required any more in a certain location. The possibility the repeatedly use shelter in different locations is one of the advantages of this type of system. The number of the installation cycles is not limited.

The advantages of our shelter system are:

- Water tightness
- Light weight
- Mobile
- Fast installation
- Fast relocation after usage
- Repeatedly usable
- Vast number of choices when compiling the shelter system

OFFICE MODULE



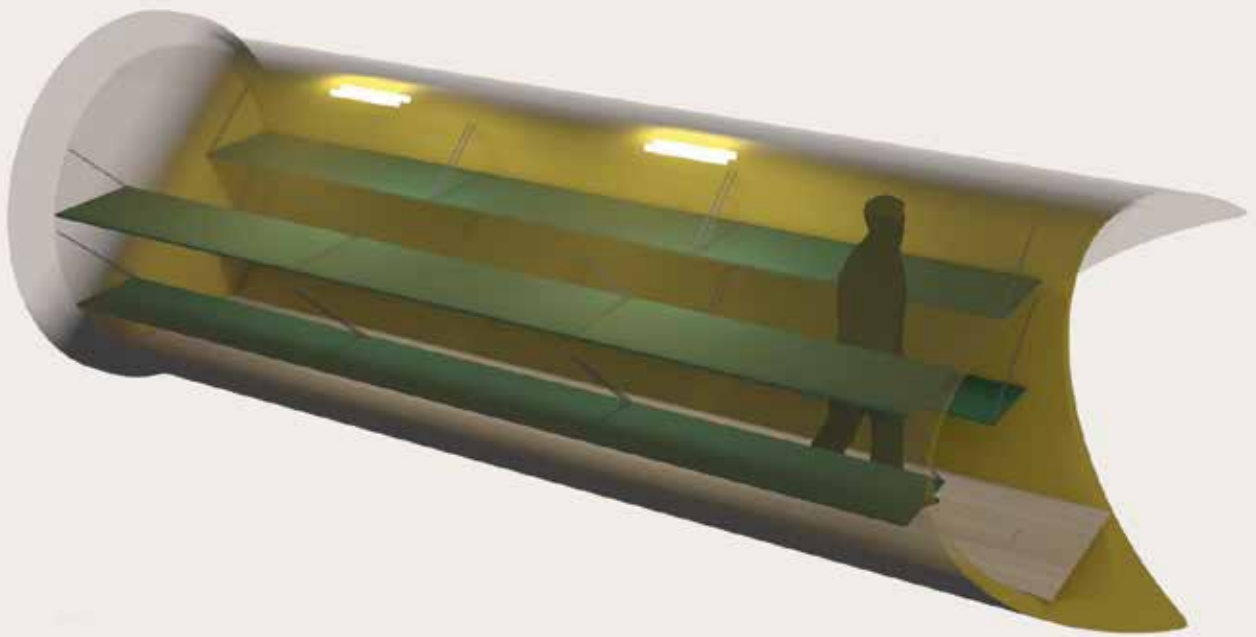
Outside dimensions: 6 x 2,4 m

Weight: Approximately 2 t

Price: Starting at 23 000 EUR

The price includes: Shelter module itself, readiness to be connected to electrical, data and ventilation networks, lighting, basic office furniture for 2 working stations.

BEDROOM MODULE



Outside dimensions: 6 x 2,4 m

Weight: Approximately 2 t

Price: Starting at 18 000 EUR

The price includes: Shelter module itself, beds, readiness to be connected to electrical and ventilation networks, lighting, weapon bracket for each person.

SHOWER MODULE



Outside dimensions: 6 x 2,4 m

Weight: Approximately 3 t

Price: Starting at 35 000 EUR

The price includes: Shelter module itself, readiness to be connected to electrical, water, sewage and ventilation networks, lighting, humidity proof door.

TOILET MODULE



Outside dimensions: 6 x 2,4 m

Weight: Approximately 3 t

Price: Starting at 27 000 EUR

The price includes: Shelter module itself, readiness to be connected to electrical, water, sewage and ventilation networks, lighting, door.

KITCHEN MODULE



Outside dimensions: 6 x 2,4 m

Weight: Approximately 3 t

Price: Starting at 35 000 EUR

The price includes: Shelter module itself, readiness to be connected to electrical, water, sewage and ventilation networks, lighting, 2 stoves and hot plate systems, 4 sinks, basic furniture.

STORAGE MODULE



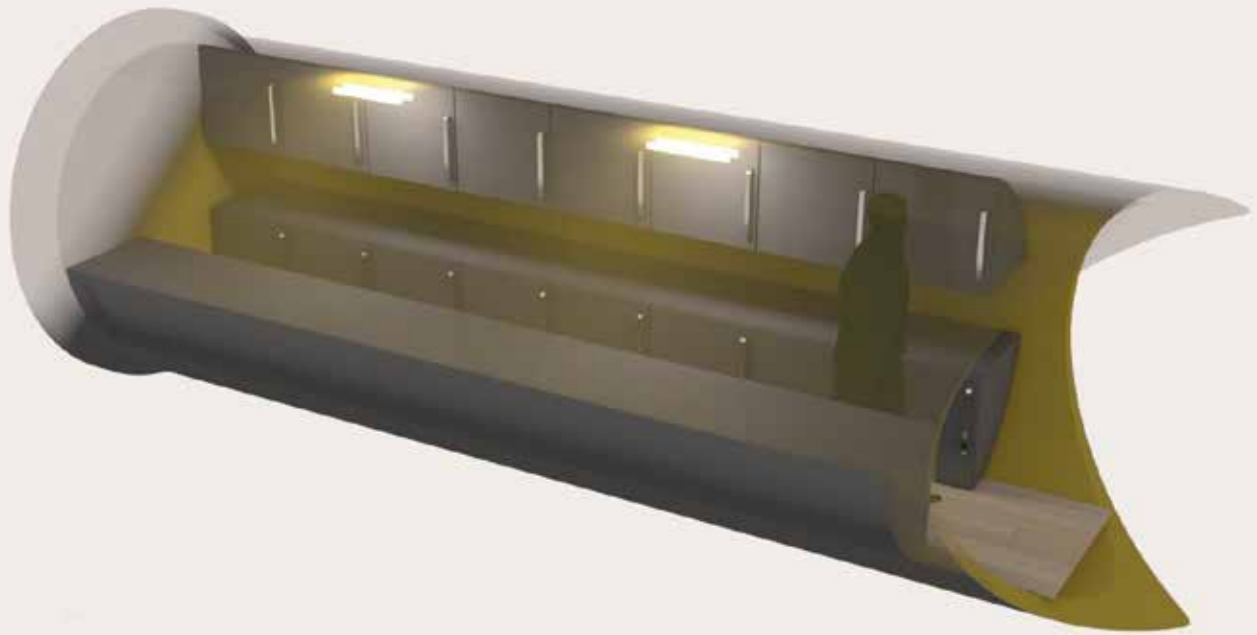
Outside dimensions: 6 x 2,4 m

Weight: Approximately 2 t

Price: Starting at 18 000 EUR

The price includes: Shelter module itself, readiness to be connected to electrical and ventilation networks, lighting, shelves.

TECHNICAL SUPPORT MODULE



Outside dimensions: 6 x 2,4 m

Weight: Approximately 2 t

Price: Starting at 19 000 EUR

The price includes: Shelter module itself, readiness to be connected to electrical, water, sewage and ventilation networks, lighting.

GENERATOR MODULE



Outside dimensions: 6 x 2,4 m

Weight: Approximately 2 t

Price: Starting at 35 000 EUR

The price includes: Shelter module itself, 10kWh generator, fuel tank, readiness to be connected to electrical and ventilation networks, lighting, sound proof door, enclosure.

SERVER MODULE



Outside dimensions: 6 x 2,4 m

Weight: Approximately 3 t

Price: Starting at 20 000 EUR

The price includes: Shelter module itself, readiness to be connected to electrical, data and ventilation networks, lighting, armored door, basic office furniture for 1 working station, cooling system.

COLDROOM/FREEZER MODULE



Outside dimensions: 6 x 2,4 m

Weight: Approximately 2 t

Price: Starting at 25 000 EUR

The price includes: Shelter module itself, refrigerator, readiness to be connected to electrical network lighting, insulated door.

MORGUE MODULE



Outside dimensions: 6 x 2,4 m

Weight: Approximately 2 t

Price: Starting at 25 000 EUR

The price includes: Shelter module itself, refrigerator, readiness to be connected to electrical network, lighting, insulated door.

CORRIDOR MODULE



Outside dimensions: 6 x 2,4 m

Weight: Approximately 2 t

Price: Starting at 25 000 EUR

The price includes: Corridor module itself, readiness to be connected to electrical, ventilation, water, sewage networks, lighting, up to 2 connections to special modules.

Terramil

WWW.TERRAMIL.EE